

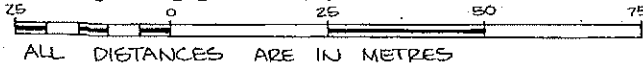
Strata Plan  
Plan #: VAS1503 App #: N/A CH #: (Amend) RCVD: 1988-02-26 RCST: 2016-05-25 17:28:00

**STRATA PLAN OF LOT B,  
PARCEL 'C', DISTRICT LOT 688,  
GROUP 1, PLAN 19090,  
NEW WESTMINSTER DISTRICT.**

**STRATA PLAN  
VR 1503**

DEPOSITED AND REGISTERED  
IN THE LAND TITLE OFFICE  
AT Vancouver, B.C.,  
THIS 2nd DAY OF  
May, 1985.

**SCALE: 1:750**



*J. Dimmell*  
DEPUTY REGISTRAR

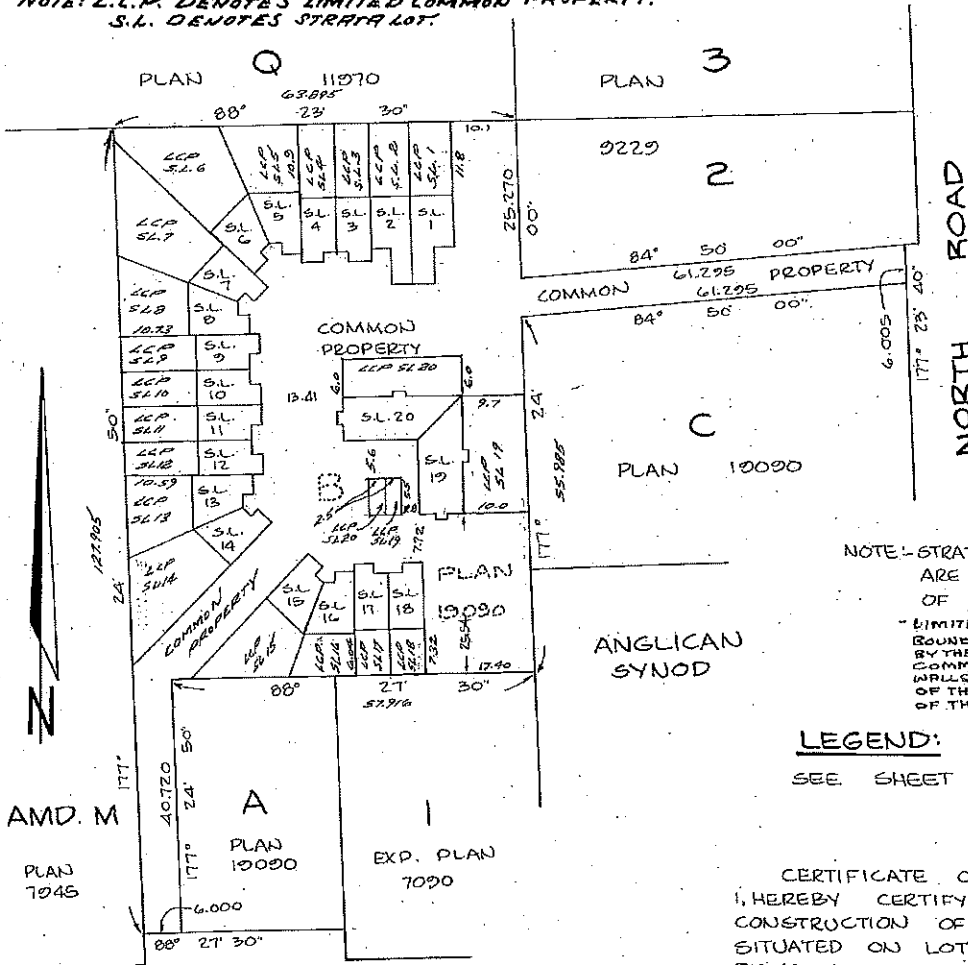
N31907-L

ADDRESS FOR SERVICE OF DOCUMENTS:  
THE OWNERS - STRATA PLAN VR 1503  
C/O CONSTANTINI & COMPANY  
801 UNITED KINGDOM BUILDING  
400 GRANVILLE STREET  
VANCOUVER, B.C. V6C 1T2

CIVIC ADDRESS: SUNSHINE COAST HIGHWAY  
GIBSONS, B.C.

NOTE: THE BUILDINGS HAVE NO NAME  
AS OF OCTOBER 24, 1983.

NOTE: L.C.P. DENOTES LIMITED COMMON PROPERTY.  
S.L. DENOTES STRATA LOT.



NOTE - STRATA LOT BOUNDARIES  
ARE TO THE CENTRE  
OF ALL WALLS  
- LIMITED COMMON PROPERTY  
BOUNDARIES ARE DEFINED  
BY THE PRODUCTION OF  
COMMON WALLS AND EXTERIOR  
WALLS TO THE INTERSECTION  
OF THE PERIMETER BOUNDARY  
OF THE COMMON PROPERTY.

**LEGEND:**

SEE SHEET 4

CERTIFICATE OF APPROVAL  
I, HEREBY CERTIFY THAT THE  
CONSTRUCTION OF THE BUILDING  
SITUATED ON LOT B, PARCEL 'C',  
DISTRICT LOT 688, GROUP 1, N.W.D.,  
HAS BEEN APPROVED FOR STRATA  
PLAN DEVELOPMENT, THIS  
19 DAY OF JANUARY, 1985

*R.L. Goddard*  
Deputy-APPROVING OFFICER  
TOWN OF GIBSONS

THIS PLAN LIES WITHIN  
THE TOWN OF GIBSONS

I, WILLIAM KERR, A BRITISH COLUMBIA LAND  
SURVEYOR OF ABBOTSFORD IN BRITISH  
COLUMBIA, CERTIFY THAT THE BUILDINGS  
ERECTED ON THE ABOVE DESCRIBED PARCEL  
ARE WHOLLY WITHIN THE EXTERNAL BOUNDARIES  
OF THAT PARCEL. DATED AT ABBOTSFORD, B.C.,  
THIS 25th DAY OF October, 1983.

*William Kerr*  
B.C.L.S.

THIS PLAN LIES WITHIN THE SUNSHINE  
COAST REGIONAL DISTRICT.

**WILLIAM KERR, B.C.L.S.**  
P.O. BOX 36,  
ABBOTSFORD, B.C.

PH. 853-5461

STRATA PLAN

**VR 1503**

CONDOMINIUM ACT

		FORM 1	FORM 2	FORM 3
STRATA LOT NUMBER	SHEET NUMBER	SCHEDULE OF UNIT ENTITLEMENT	SCHEDULE OF INTEREST UPON DESTRUCTION	SCHEDULE OF VOTING RIGHTS
		UNIT ENTITLEMENT	INTEREST UPON DESTRUCTION	NUMBER OF VOTES
1	3,4,5	128	47,000	
2	3,4,5	126	47,000	
3	3,4,5	124	47,000	
4	3,4,5	124	47,000	
5	3,4,5	116	47,000	
6	3,4,5	116	47,000	
7	3,4,5	116	47,000	
8	3,4,5	116	47,000	
9	3,4,5	124	47,000	
10	3,4,5	124	47,000	
11	3,4,5	124	47,000	
12	3,4,5	124	47,000	
13	3,4,5	116	47,000	
14	3,4,5	118	47,000	
15	3,4,5	116	47,000	
16	3,4,5	116	47,000	
17	3,4,5	124	47,000	
18	3,4,5	128	47,000	
19	3	108	47,000	
20	3	108	47,000	
AGGREGATE		2396	940,000	

ACCEPTED AS TO FORMS 1 AND 2

DATED THIS 30<sup>th</sup> DAY OF APRIL, 1985.

*Murray McLevin*  
for SUPERINTENDANT OF INSURANCE

WE/I THE UNDERSIGNED DO SOLEMNLY DECLARE THAT  
 1) WE/I THE UNDERSIGNED ARE DULY-AUTHORIZED AGENT(S) FOR THE OWNER-DEVELOPER.  
 2) THE STRATA PLAN IS ENTIRELY FOR RESIDENTIAL USE.

WE/I MAKE THIS SOLEMN DECLARATION CONSCIENTIOUSLY BELIEVING IT TO BE TRUE AND KNOWING THAT IT IS OF THE SAME FORCE AND EFFECT AS IF MADE UNDER OATH. DECLARED BEFORE ME AT VANCOUVER IN THE PROVINCE OF BRITISH COLUMBIA, THIS 18<sup>th</sup> DAY OF JANUARY, 1985.

*Tommy W.K. Tao*

*W.K. Tao*

A NOTARY PUBLIC IN AND FOR THE PROVINCE OF BRITISH COLUMBIA, TOMMY W.K. TAO

SIGNATURES AS REQUIRED

*W.K. Tao*

YALETOWN DEVELOPMENT COMPANY LIMITED (AUTHORIZED SIGNATORY)

18<sup>th</sup> Jan 1985 W.K.

BCLB

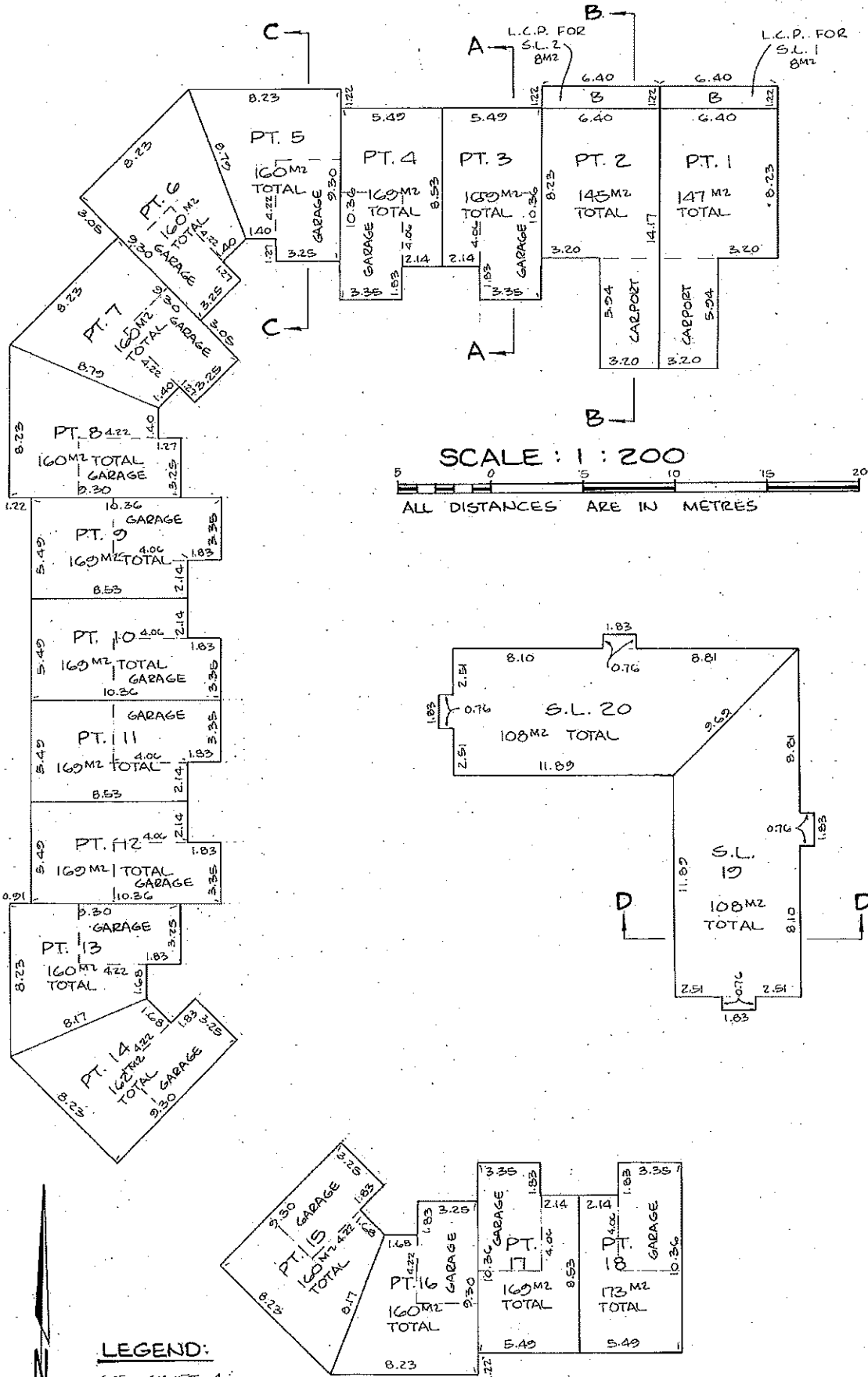
Plan #: VAS1503 App #: N/A Cr#: (Amend) RCVD: 1985-02-26 RCST: 2016-05-25 17:28:00

Strata Plan

STRATA PLAN

# FIRST FLOOR

# VR1503



**LEGEND:**  
SEE SHEET 4

WIK 25<sup>th</sup> Oct. 1983

BCLIS.

6111-82

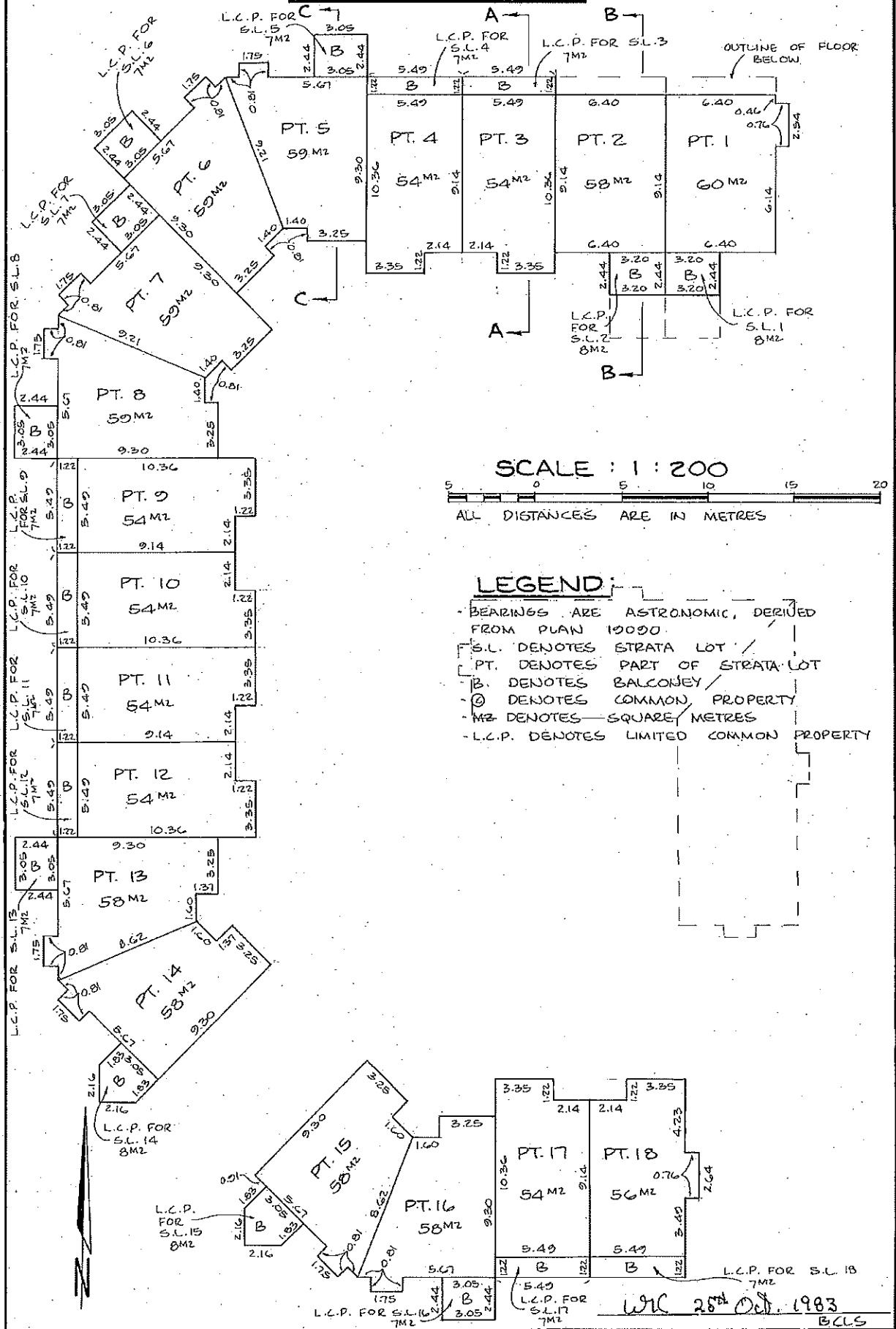
Plan # VAS1503 App # N/A Ch # (Amended) RCVD - 1989-02-28 RCST 2016-06-25 17:28:00

Status: Filed

STRATA PLAN

VR1503

SECOND FLOOR



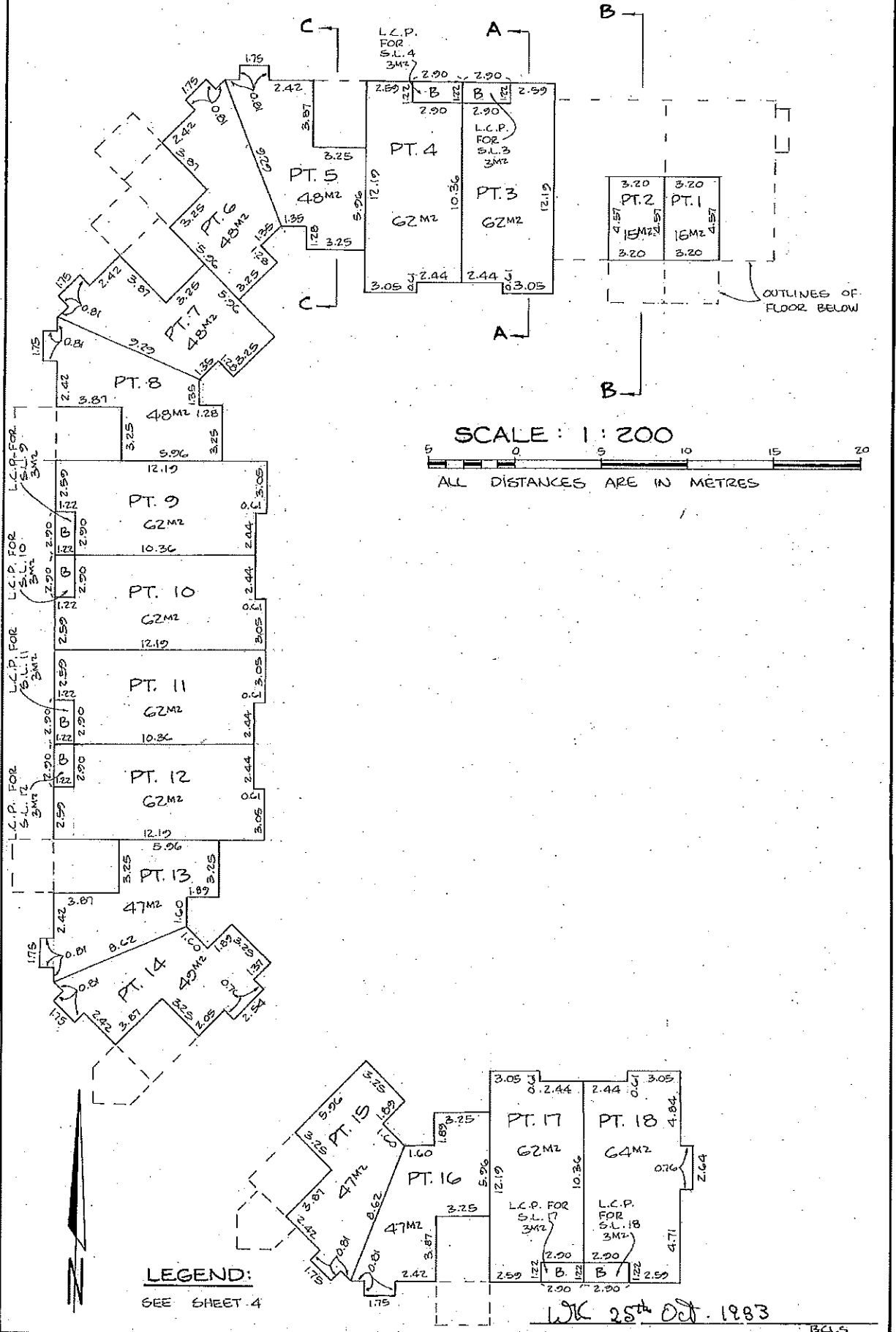
STATUS: FIELD  
PLAN #: VAS1503 App #: N/A Crt #: (Amended) RCMD: 1989-02-26 RCST: 2016-05-25 17:28:00

WJC 20th Oct. 1983  
BCLS

STRATA PLAN

VR 1503

THIRD FLOOR



LEGEND:  
SEE SHEET 4

WK 25th Oct. 1983

BCL

S111-82

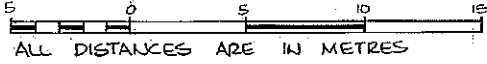
VR 1503

Status: Filed

Plan #: VAS1503 App #: N/A Cr#: (Altered) RCVD: 1988-02-28 ROST: 2016-06-25 17:28.00

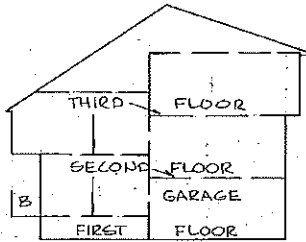
SECTION A-A

SCALE: 1:200



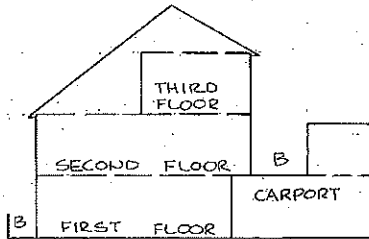
ALL DISTANCES ARE IN METRES

TYPICAL OF STRATA LOTS 3, 4, 9, 10, 11, 12, 17 AND 18



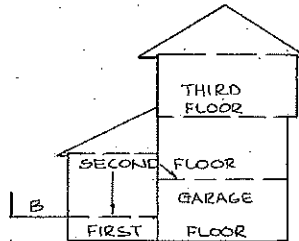
SECTION B-B

TYPICAL OF STRATA LOTS 1 AND 2



SECTION C-C

TYPICAL OF STRATA LOTS 5, 6, 7, 8, 13, 14, 15 AND 16



SECTION D-D

TYPICAL OF STRATA LOTS 19 AND 20



1911. 25th Oct. 1983.

B.C.L.S.

5111-82



